



Planning Scheme Amendments

Tract has extensive experience in the preparation and coordination of planning scheme amendments and the rezoning of land.

We begin with a thorough investigation of the site, and work collaboratively with Councils, the Department of Planning, and Authorities, to process an amendment through the approval stages.

Our knowledge of the suite of zones, overlays and statutory systems, along with the strategic planning context, places us in a strong position to advise our clients on the most favourable path.

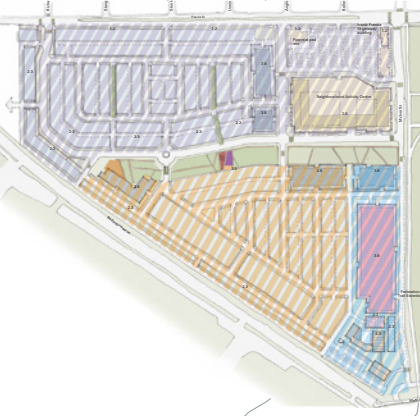
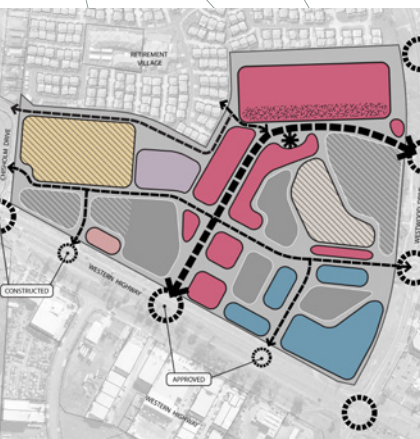
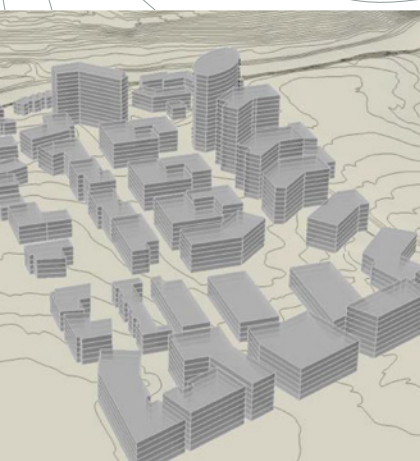
We can draw on our in house skills in urban design and landscape architecture, together with our strong professional networks, to form comprehensive project teams.

From small and large scale residential, commercial, town centre, industrial, and infrastructure projects, our approach is based on providing timely and accurate advice that surpasses our clients expectations and facilitates high quality development outcomes.

Our strength lies in being fully aware of emerging trends and policy changes that can have major implications on the use and development of land, and advising our clients accordingly.

Our work with both public and private clients has provided us with an unparalleled range of skills across all facets of planning, including detailed understanding of statutory systems, that can assist in delivering timely outcomes.

Our skills in this area have been recognised through numerous awards from Planning Institute of Australia, Urban Development Institute of Australia, and the Property Council, including the UDIA Consultant of the Year award in 2011.



- Projects**
- Botanic Ridge, Cranbourne, VIC
 - Burnside Activity Centre, VIC
 - East Brunswick Activity Centre, VIC
 - Bradmills, Maribyrong, VIC
 - Burwood Square Activity Centre, VIC
 - East Brunswick Activity Centre, VIC
 - Edgewater On The Maribyrong, VIC
 - Fairfield Mill, Amcor/Colliers, VIC
 - Killara, Wadonga, VIC
 - Manor Lakes, VIC
 - Metro 3175, Dandenong Saleyards, VIC
 - Moonah Links Recreational Development, VIC
 - Moorabbin Airport, VIC
 - New Adelaide Royal Hospital, SA
 - Penridge Plaza & Penridge Village, VIC