

Landscape & Visual Assessment

Tract offers comprehensive landscape & visual assessment services for a range of project types & client requirements.

Tract provides a full range of landscape and visual impact assessment services to meet Federal and State legislative requirements, including expert evidence to VCAT and Panel hearings including detailed technical studies, tailored to meet specific project and client needs.

These studies typically include detailed research, site analysis and technical benchmarking. Project methodologies can be developed to meet specific authority and client requirements.

Project results can be used as a basis for expert evidence if required.

Senior Tract staff provide expert evidence at VCAT and Independent Panel hearings on matters relating to the siting and design of developments and landscape and visual impact assessment.

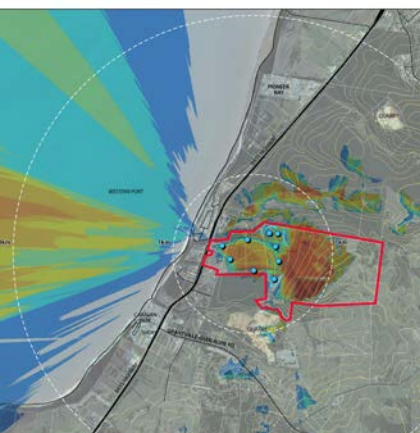
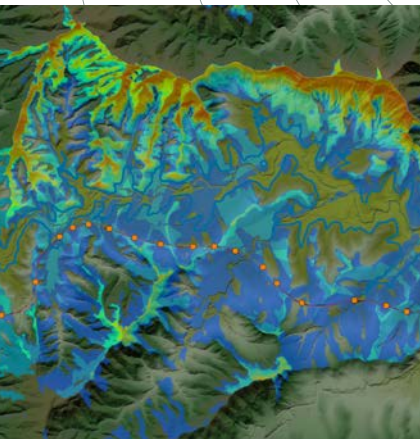
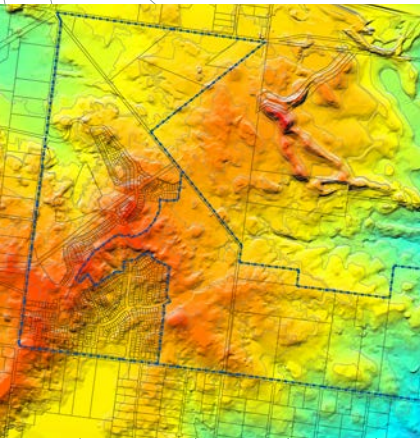
Landscape and visual impact assessment services are provided to clients for a range of issues associated with projects such as land development, extractive industry development, building siting, landscape planning and the development and management of parks, open space areas, national parks, coastal reserves and heritage sites.

Tract utilises high quality digital SLR photographic equipment, GPS devices and state of the art 3D modelling software in conjunction with CAD and survey data to quickly create realistic, accurate and verifiable images of proposed development options.

Modelling outputs achieve VCAT and EES reporting standards.

Services:

- EES standard technical studies
- Detailed technical assessments
- Expert opinion & advice
- VCAT & Panel hearing presentation
- Visualisation & communication
- GIS services



- Projects**
- Port of Melbourne Signal Tower
 - Yarra Valley Quarry
 - Alcoa Valley Quarry
 - South Anglesea Coal Mine
 - Sole Gas Coast Extension
 - Lake Cowal Project - Patricia Baleen
 - Siting & Design Powerline EES Structures on the Victorian Coast
 - Casey Foothills Visual Assessment Strategy
 - Plenty Valley Visual Assessment
 - Deer Park Bypass
 - Port Phillip Coast Design & Siting Guidelines
 - Rural Houses Siting & Siting Guidelines
 - Western Australia SEC Facility Guidelines
 - Beaudesert Boonah Road
 - Grantville Sand Extraction