



Golf Services

Tract has worked on the redevelopment of numerous existing Golf Courses, as well as guiding the development of many new courses within green-field settings.

We appreciate how important it is to both maximise the return on the development and to create a strong sense of place for residents and visitors to the course.

Tract has significant experience in both statutory and strategic planning and is highly skilled in determining appropriate planning controls and frameworks to facilitate planning approvals.

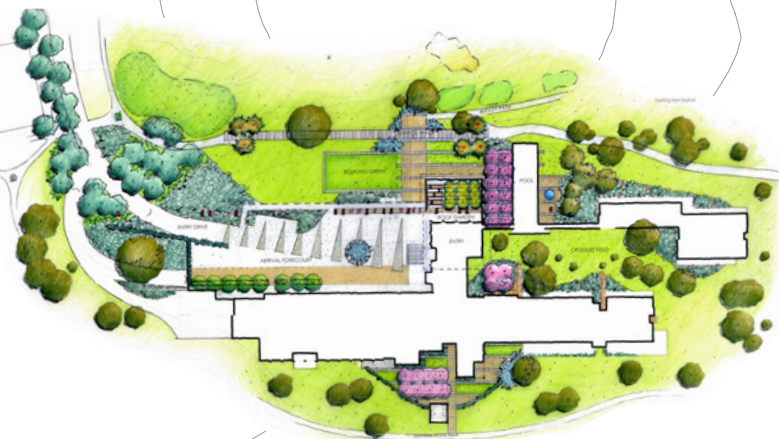
Tract's primary focus in landscape and urban design is to create high quality residential communities that provide strong integration between residential areas and golf course facilities.

Tract has extensive experience with planting design, clubhouse design, golf estate landscapes, wetlands and water storage design, cart path and hard surface areas and iconic golf estate entrances.

Our designers utilise the latest 3D design, CAD and visualisation software to produce accurate construction costs and media projections that predict outcomes throughout the design process.

Tract's Golf services include;

- Planning Approval
- Masterplan Development
- Golf, Clubhouse & Residential Landscape Architecture
- Visualisation & 3D Interactive Models



Projects

- Moonah Links, Mornington Peninsula, VIC
- Great Martha Golf Estate, Karjat, Mumbai
- Jagabara Golf Course, Karjat, Mumbai
- Eynesbury Station, Melton South, VIC
- Settlers Run Golf & Country Club, QLD
- Hidden Valley Golf & Country Club, VIC
- RACV Torquay, VIC
- RACV Healesville, VIC
- Metropolitan Golf Club, Cranbourne, VIC
- Eastern Golf Club, Oakleigh South, VIC
- Camden Valley Golf Course, Yarra Valley, VIC
- Chengdu Golf Resort, Sichuan, China
- Sand River Golf Course, NSW
- Regent Park Golf Course, Shenzhen, China
- River Park Golf Course, Adelaide, SA